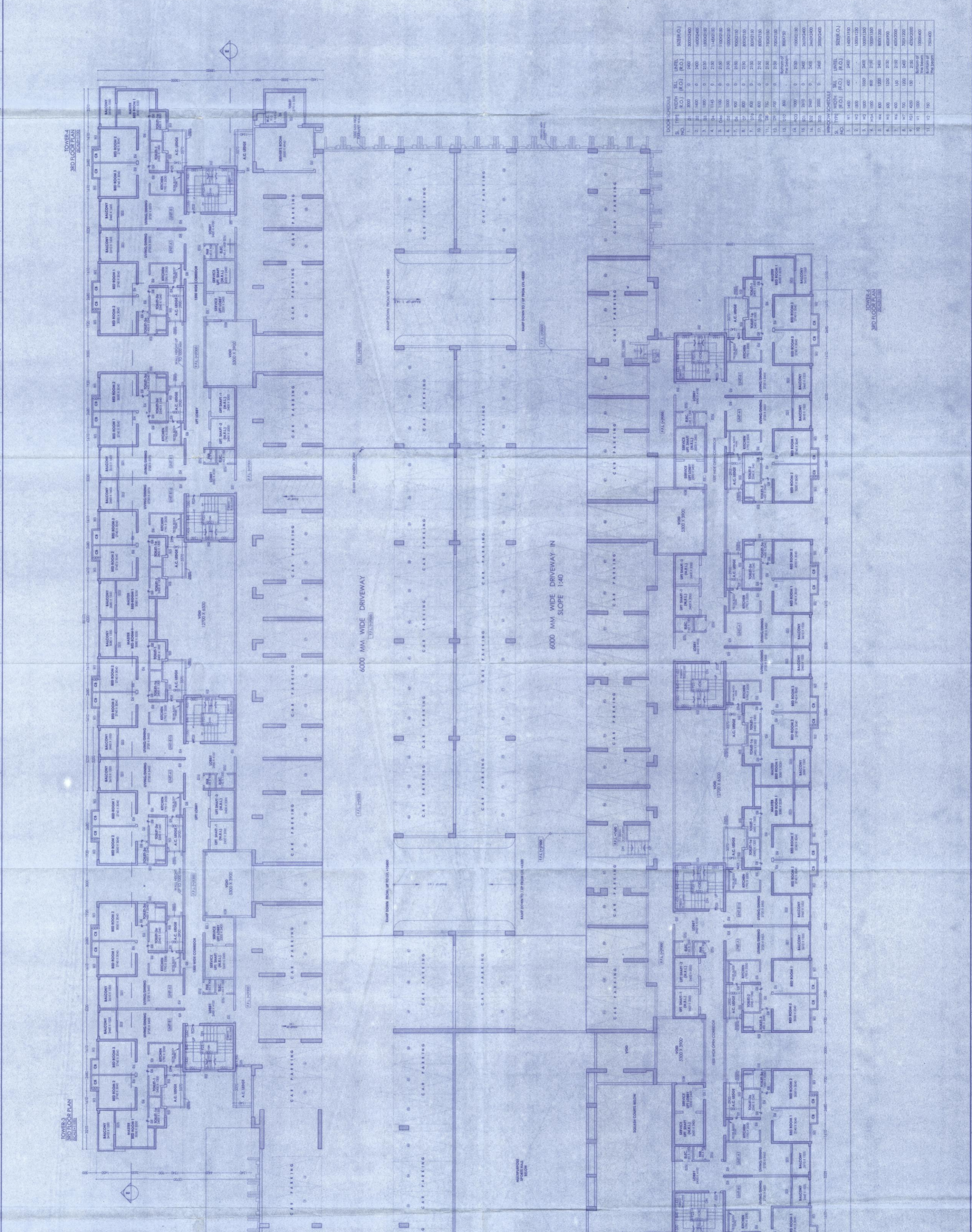


NAME OF OWNER:
PR WINYAK COMPLEX LLP
 As constituted by members of

MEMBER OF OWNERS:
 1. BANGKOK REAL ESTATE PVT. LTD.
 2. BANGKOK REAL ESTATE PVT. LTD.
 3. BANGKOK REAL ESTATE PVT. LTD.
 4. BANGKOK REAL ESTATE PVT. LTD.
 5. BANGKOK REAL ESTATE PVT. LTD.
 6. BANGKOK REAL ESTATE PVT. LTD.
 7. BANGKOK REAL ESTATE PVT. LTD.
 8. BANGKOK REAL ESTATE PVT. LTD.
 9. BANGKOK REAL ESTATE PVT. LTD.
 10. BANGKOK REAL ESTATE PVT. LTD.
 11. BANGKOK REAL ESTATE PVT. LTD.
 12. BANGKOK REAL ESTATE PVT. LTD.
 13. BANGKOK REAL ESTATE PVT. LTD.
 14. BANGKOK REAL ESTATE PVT. LTD.
 15. BANGKOK REAL ESTATE PVT. LTD.
 16. BANGKOK REAL ESTATE PVT. LTD.
 17. BANGKOK REAL ESTATE PVT. LTD.
 18. BANGKOK REAL ESTATE PVT. LTD.
 19. BANGKOK REAL ESTATE PVT. LTD.
 20. BANGKOK REAL ESTATE PVT. LTD.
 21. BANGKOK REAL ESTATE PVT. LTD.
 22. BANGKOK REAL ESTATE PVT. LTD.
 23. BANGKOK REAL ESTATE PVT. LTD.
 24. BANGKOK REAL ESTATE PVT. LTD.
 25. BANGKOK REAL ESTATE PVT. LTD.
 26. BANGKOK REAL ESTATE PVT. LTD.
 27. BANGKOK REAL ESTATE PVT. LTD.
 28. BANGKOK REAL ESTATE PVT. LTD.
 29. BANGKOK REAL ESTATE PVT. LTD.
 30. BANGKOK REAL ESTATE PVT. LTD.
 31. BANGKOK REAL ESTATE PVT. LTD.
 32. BANGKOK REAL ESTATE PVT. LTD.
 33. BANGKOK REAL ESTATE PVT. LTD.
 34. BANGKOK REAL ESTATE PVT. LTD.
 35. BANGKOK REAL ESTATE PVT. LTD.
 36. BANGKOK REAL ESTATE PVT. LTD.
 37. BANGKOK REAL ESTATE PVT. LTD.
 38. BANGKOK REAL ESTATE PVT. LTD.
 39. BANGKOK REAL ESTATE PVT. LTD.
 40. BANGKOK REAL ESTATE PVT. LTD.
 41. BANGKOK REAL ESTATE PVT. LTD.
 42. BANGKOK REAL ESTATE PVT. LTD.
 43. BANGKOK REAL ESTATE PVT. LTD.
 44. BANGKOK REAL ESTATE PVT. LTD.
 45. BANGKOK REAL ESTATE PVT. LTD.
 46. BANGKOK REAL ESTATE PVT. LTD.
 47. BANGKOK REAL ESTATE PVT. LTD.
 48. BANGKOK REAL ESTATE PVT. LTD.
 49. BANGKOK REAL ESTATE PVT. LTD.
 50. BANGKOK REAL ESTATE PVT. LTD.
 51. BANGKOK REAL ESTATE PVT. LTD.
 52. BANGKOK REAL ESTATE PVT. LTD.
 53. BANGKOK REAL ESTATE PVT. LTD.
 54. BANGKOK REAL ESTATE PVT. LTD.
 55. BANGKOK REAL ESTATE PVT. LTD.
 56. BANGKOK REAL ESTATE PVT. LTD.
 57. BANGKOK REAL ESTATE PVT. LTD.
 58. BANGKOK REAL ESTATE PVT. LTD.
 59. BANGKOK REAL ESTATE PVT. LTD.
 60. BANGKOK REAL ESTATE PVT. LTD.
 61. BANGKOK REAL ESTATE PVT. LTD.
 62. BANGKOK REAL ESTATE PVT. LTD.
 63. BANGKOK REAL ESTATE PVT. LTD.
 64. BANGKOK REAL ESTATE PVT. LTD.
 65. BANGKOK REAL ESTATE PVT. LTD.
 66. BANGKOK REAL ESTATE PVT. LTD.
 67. BANGKOK REAL ESTATE PVT. LTD.
 68. BANGKOK REAL ESTATE PVT. LTD.
 69. BANGKOK REAL ESTATE PVT. LTD.
 70. BANGKOK REAL ESTATE PVT. LTD.
 71. BANGKOK REAL ESTATE PVT. LTD.
 72. BANGKOK REAL ESTATE PVT. LTD.
 73. BANGKOK REAL ESTATE PVT. LTD.
 74. BANGKOK REAL ESTATE PVT. LTD.
 75. BANGKOK REAL ESTATE PVT. LTD.
 76. BANGKOK REAL ESTATE PVT. LTD.
 77. BANGKOK REAL ESTATE PVT. LTD.
 78. BANGKOK REAL ESTATE PVT. LTD.
 79. BANGKOK REAL ESTATE PVT. LTD.
 80. BANGKOK REAL ESTATE PVT. LTD.
 81. BANGKOK REAL ESTATE PVT. LTD.
 82. BANGKOK REAL ESTATE PVT. LTD.
 83. BANGKOK REAL ESTATE PVT. LTD.
 84. BANGKOK REAL ESTATE PVT. LTD.
 85. BANGKOK REAL ESTATE PVT. LTD.
 86. BANGKOK REAL ESTATE PVT. LTD.
 87. BANGKOK REAL ESTATE PVT. LTD.
 88. BANGKOK REAL ESTATE PVT. LTD.
 89. BANGKOK REAL ESTATE PVT. LTD.
 90. BANGKOK REAL ESTATE PVT. LTD.
 91. BANGKOK REAL ESTATE PVT. LTD.
 92. BANGKOK REAL ESTATE PVT. LTD.
 93. BANGKOK REAL ESTATE PVT. LTD.
 94. BANGKOK REAL ESTATE PVT. LTD.
 95. BANGKOK REAL ESTATE PVT. LTD.
 96. BANGKOK REAL ESTATE PVT. LTD.
 97. BANGKOK REAL ESTATE PVT. LTD.
 98. BANGKOK REAL ESTATE PVT. LTD.
 99. BANGKOK REAL ESTATE PVT. LTD.
 100. BANGKOK REAL ESTATE PVT. LTD.



DOCS. SCHEDULE

NO.	WIDTH (M)	SAL (R.O.) (R.O.)	AREA (SQ.M)	NO.	WIDTH (M)	SAL (R.O.) (R.O.)	AREA (SQ.M)
1	1.00	0.00	0.00	11	1.00	0.00	0.00
2	1.00	0.00	0.00	12	1.00	0.00	0.00
3	1.00	0.00	0.00	13	1.00	0.00	0.00
4	1.00	0.00	0.00	14	1.00	0.00	0.00
5	1.00	0.00	0.00	15	1.00	0.00	0.00
6	1.00	0.00	0.00	16	1.00	0.00	0.00
7	1.00	0.00	0.00	17	1.00	0.00	0.00
8	1.00	0.00	0.00	18	1.00	0.00	0.00
9	1.00	0.00	0.00	19	1.00	0.00	0.00
10	1.00	0.00	0.00	20	1.00	0.00	0.00
21	1.00	0.00	0.00	22	1.00	0.00	0.00
23	1.00	0.00	0.00	24	1.00	0.00	0.00
25	1.00	0.00	0.00	26	1.00	0.00	0.00
27	1.00	0.00	0.00	28	1.00	0.00	0.00
29	1.00	0.00	0.00	30	1.00	0.00	0.00
31	1.00	0.00	0.00	32	1.00	0.00	0.00
33	1.00	0.00	0.00	34	1.00	0.00	0.00
35	1.00	0.00	0.00	36	1.00	0.00	0.00
37	1.00	0.00	0.00	38	1.00	0.00	0.00
39	1.00	0.00	0.00	40	1.00	0.00	0.00
41	1.00	0.00	0.00	42	1.00	0.00	0.00
43	1.00	0.00	0.00	44	1.00	0.00	0.00
45	1.00	0.00	0.00	46	1.00	0.00	0.00
47	1.00	0.00	0.00	48	1.00	0.00	0.00
49	1.00	0.00	0.00	50	1.00	0.00	0.00
51	1.00	0.00	0.00	52	1.00	0.00	0.00
53	1.00	0.00	0.00	54	1.00	0.00	0.00
55	1.00	0.00	0.00	56	1.00	0.00	0.00
57	1.00	0.00	0.00	58	1.00	0.00	0.00
59	1.00	0.00	0.00	60	1.00	0.00	0.00
61	1.00	0.00	0.00	62	1.00	0.00	0.00
63	1.00	0.00	0.00	64	1.00	0.00	0.00
65	1.00	0.00	0.00	66	1.00	0.00	0.00
67	1.00	0.00	0.00	68	1.00	0.00	0.00
69	1.00	0.00	0.00	70	1.00	0.00	0.00
71	1.00	0.00	0.00	72	1.00	0.00	0.00
73	1.00	0.00	0.00	74	1.00	0.00	0.00
75	1.00	0.00	0.00	76	1.00	0.00	0.00
77	1.00	0.00	0.00	78	1.00	0.00	0.00
79	1.00	0.00	0.00	80	1.00	0.00	0.00
81	1.00	0.00	0.00	82	1.00	0.00	0.00
83	1.00	0.00	0.00	84	1.00	0.00	0.00
85	1.00	0.00	0.00	86	1.00	0.00	0.00
87	1.00	0.00	0.00	88	1.00	0.00	0.00
89	1.00	0.00	0.00	90	1.00	0.00	0.00
91	1.00	0.00	0.00	92	1.00	0.00	0.00
93	1.00	0.00	0.00	94	1.00	0.00	0.00
95	1.00	0.00	0.00	96	1.00	0.00	0.00
97	1.00	0.00	0.00	98	1.00	0.00	0.00
99	1.00	0.00	0.00	100	1.00	0.00	0.00

TOWERS 3, 4 & 5 3RD FLOOR PLAN

REVISIONS:

NO.	DATE	DESCRIPTION
1	16.03.2017	Issue for approval
2	16.03.2017	Issue for construction

APPROVED:
 M.N. Consultants (P) Design Solutions
 15/6, Prachin Buri Road, Klongkran 10110
 Email: info@mnconsultants.com
 Web: www.mnconsultants.com

DATE: 16.03.2017
SCALE: 1:100
PROJECT: PR WINYAK COMPLEX
NO. OF SHEETS: 10
SHEET NO.: 10/10

DESIGNED BY: M.N. Consultants (P) Design Solutions
CHECKED BY: M.N. Consultants (P) Design Solutions
APPROVED BY: M.N. Consultants (P) Design Solutions

THIS DRAWING IS THE PROPERTY OF M.N. CONSULTANTS (P) DESIGN SOLUTIONS AND IS NOT TO BE REPRODUCED OR USED IN ANY WAY WITHOUT THE WRITTEN PERMISSION OF M.N. CONSULTANTS (P) DESIGN SOLUTIONS.